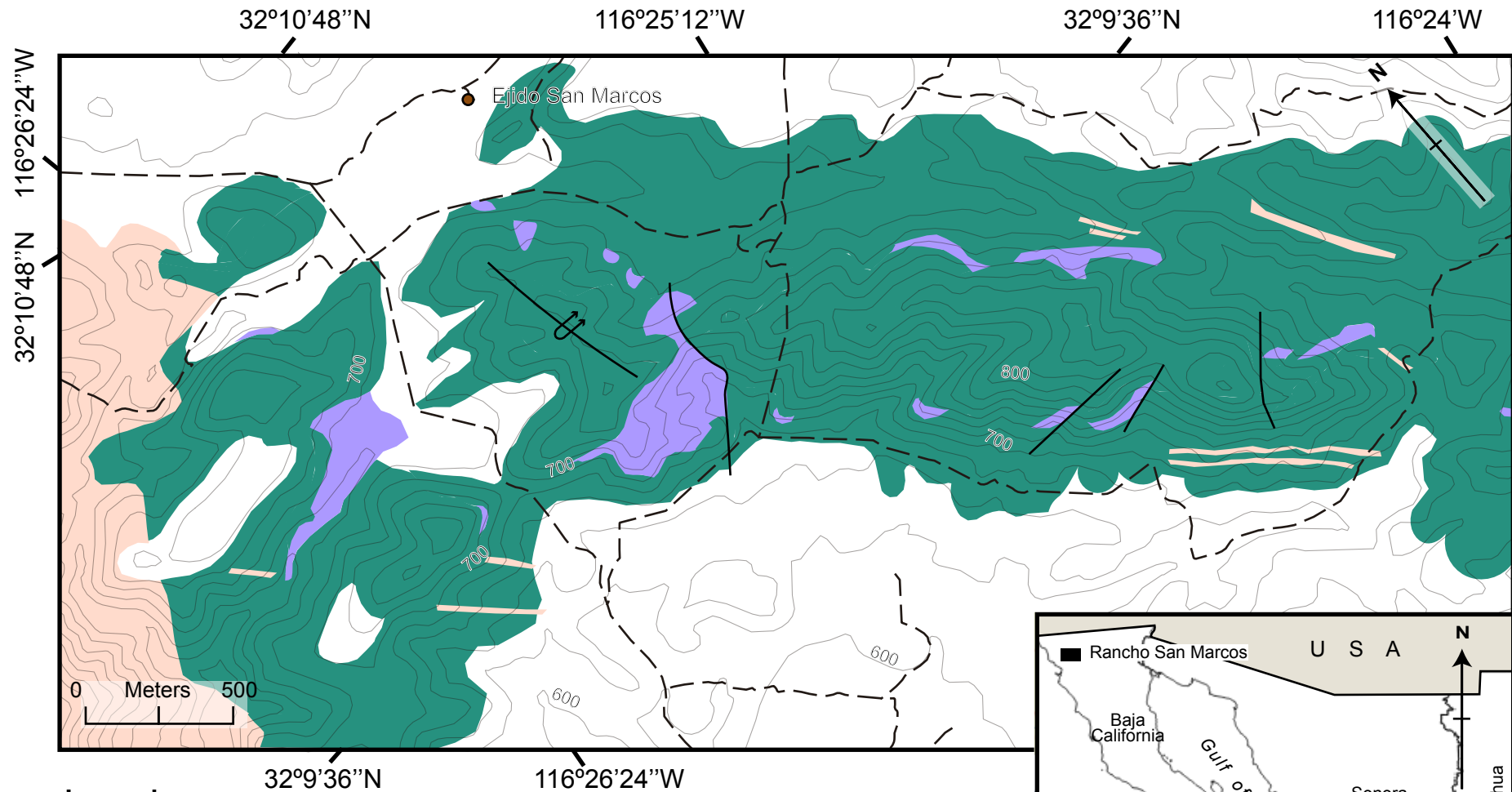
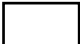









Geologic map of the Rancho San Marcos (Baja California). Based on Lothringer (1993)



Legend

- | | | | |
|---|---|---|----------------------|
|  | Non-differentiated rocks (Quaternary-Paleogene) |  | Dirt Road |
|  | Non-differentiated Cretaceous igneous rocks |  | Locality |
|  | Melange rocks (Triassic-Jurassic) |  | Overturned anticline |
|  | Allochthonous rocks (Ordovician) |  | Fault |

Datum: UTM Zone 11N, WGS-84 (EPSG: 32611), units: meters

